



JOHN PSARRAS
S&P CHARTERING



IN PIRAEUS SINCE 1981

Ph:+30 210 4123696 4133931 4115482 Fx:+30 210 4170618
E'Mail: psarras@psarrasj.gr Website:www.psarrasj.gr
(Members of Hellenic Shipbrokers Association - 1984)

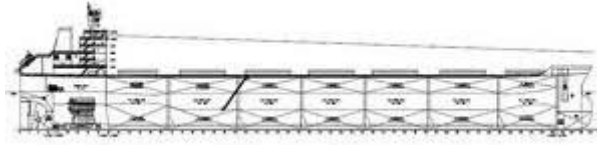
BI-MONTH REPORT

MID JANUARY 2020

The scope of this report is to assist our clients and friends with a quick glance every about 15 days to get a feeling of the market by reading the more interesting sales in view of higher or lower prices of the main vessels types as well as the demolition prevailing prices.

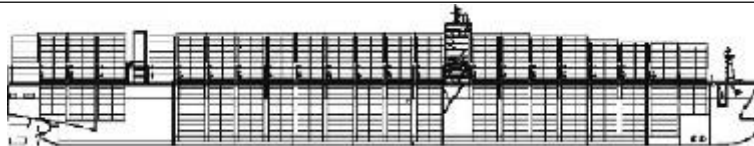


Copyright:ventuari



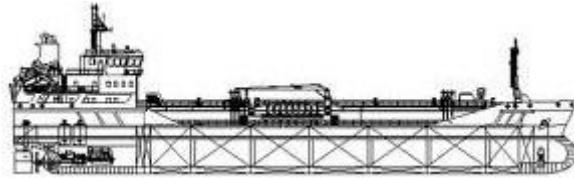
BULK CARRIERS

| NAME | DWT | Y.O.B | P.O.B | PRICE |
|--------------------------|-------|-------|---------|-----------------------------|
| MAJESTIC SKY | 81949 | 2014 | JAPAN | 21,3 MIL USD TO JAPANESE |
| PAN KYLA | 79454 | 2012 | CHINA | 11,7 MIL USD TO UNDISCLOSED |
| SUDESTADA | 75597 | 2010 | CHINA | 11,25 MIL USD TO GREEKS |
| CALIPSO | 73691 | 2005 | CHINA | 7,5 MIL USD TO UNDISCLOSED |
| VINCENT GEMMA | 56872 | 2010 | CHINA | 9,8 MIL USD TO CHINESE |
| FRIED A SELME R | 55718 | 2004 | JAPAN | 8,7 MIL USD TO CHINESE |
| ALAM MANIS | 55652 | 2007 | JAPAN | 10,8 MIL USD TO UNDISCLOSED |
| JIN MING | 50354 | 2001 | CHINA | 5,45 MIL USD TO UNDISCLOSED |
| COSTAS L | 43929 | 1997 | S.KOREA | 4 MIL USD TO CHINESE |
| GLOBAL GARLAND | 32115 | 2009 | JAPAN | 7,3 MIL USD TO UNDISCLOSED |
| GEORGIA | 28685 | 2000 | JAPAN | 4 MIL USD TO GREEKS |
| MARPESSA | 17386 | 1996 | CHINA | 2,15 MIL USD TO UNDISCLOSED |



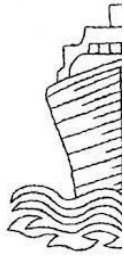
CONTAINER SHIPS

| NAME | DWT | TEU | Y.O.B. | P.O.B | PRICE |
|--------------|-------|------|--------|-------|------------------------|
| CAPE NASSAU | 23327 | 1740 | 2010 | CHINA | 6,8 MIL USD TO CHINESE |
| MERCS JAFFNA | 16908 | 1304 | 2009 | CHINA | 4,8 MIL USD TO GERMANS |



TANKERS

| NAME | DWT | HULL | Y.O.B | P.O.B. | PRICE |
|-------------------------|--------|------|--------------|---------|----------------------------------|
| KIWI | 300000 | DH | 2020 | S.KOREA | 106 MIL USD TO UNDISCLOSED |
| TENYO | 281050 | DH | 2000 | JAPAN | 24 MIL USD TO GREEKS |
| BLUE SUN | 105856 | DH | 2000 | S.KOREA | 13,5 MIL USD TO PG BASED |
| GULF CASTLE | 74999 | DH | 2009 | S.KOREA | 18,6 MIL USD TO US BASED |
| CULPEO | 46683 | DH | 2004 | CROATIA | 12 MIL USD TO CHINESE |
| JAL SULAYNA | 46866 | DH | 2004 | JAPAN | 9,9 MIL USD TO UNDISCLOSED |
| ECO REVOLUTION ECOFLEET | 39208 | DH | 2016 2015 | VIETNAM | EN BLOC 40 MIL USD TO NORWEGIANS |
| NEW FAITH | 17781 | DH | 1997 | JAPAN | 2,95 MIL USD TO UNDISCLOSED |
| GS FIGHTER | 17527 | DH | 2008 | S.KOREA | 12,2 MIL USD TO UNDISCLOSED |
| CAPE DALY | 12754 | DH | 2010 | S.KOREA | 6.3 MIL USD TO VIETNAMESE |
| ORIENTAL NADESHIKO | 12480 | DH | 2009 | JAPAN | 10,7 MIL USD TO S.KOREAN |



DEMOLITION



BANGLADESH

| NAME | LDT | DWT | Y.O.B | P.O.B. | PRICE |
|-------------|------|-------|-------|--------|--------------------------|
| TRUST HONOR | 2296 | 7088 | 1985 | JAPAN | 347 USD PER LDT |
| KOTA HADIAH | 5313 | 17626 | 1997 | JAPAN | 399 USD PER LDT |



INDIA

| NAME | LDT | DWT | Y.O.B | P.O.B. | PRICE |
|--------------|-------|-------|-------|--------|--|
| EVER DEVELOP | 21820 | 55515 | 1998 | JAPAN | 420 USD PER LDT (GREEN RECYCLING) |

Disclaimer

All information stated in this report has been collected from a variety of maritime sources and is presented in good faith and without any guarantee from our part .

J. PSARRAS S+P CHARTERING, shall not accept any responsibility for any errors and/or omissions arising from this report and cannot be held responsible for any action taken and/or losses occurred as a result of the details included in this report.

Recirculation of same is not permitted without the written agreement of the aforementioned company, which is the only entitled one to produce copies of same.